

Wireless PIR Motion Detector & Door/Window Sensor

User Manual



It's especially designed for request-to-exit applications, combines a PIR motion detector & door/window sensor. It detects the opening or closing of a window, door, gate or roller blind and indoor human movement. Adopted advanced fuzzy logic chip and intelligent analysis distinguish signal between body movement and interference to minimize false alarms. Cover tamper detection and state & low battery indication ensures the safety.

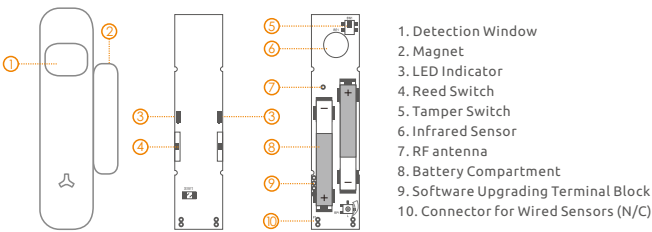
Features:

- Stylish compact design, easy to install.
- Modern design will compliment any interior.
- Combines PIR & Door Sensor, double security.
- LED backlight indication for alarm status & low battery.
- Customized high quality lens, pet-immunity.
- PIR sleeping mode for low-power consumption.
- FHSS technology, anti-interference, protect from blocking.
- Long battery life for 1 year.
- Adopt US Perkinelmer LHI968 chips high-end element.
- Special RFI protection, high performance, low noise.
- Tamper protection.

Specification:

- Power Supply: DC 3V (2pcs of AAAA, LR61 Battery)
- Standby Current: SS-P01: $\leq 45\mu A$
SS-P01 PLUS: $\leq 50\mu A$
- Alarm Current: SS-P01: $\leq 26mA$
SS-P01 PLUS: $\leq 39mA$
- Temperature: $-20^{\circ}C \sim 55^{\circ}C$
- Humidity: $\leq 80\%$ (no condensing)
- Detector Dimensions(L x W x H): 21 X 90 X 18mm
- Magnet Dimensions(L x W x H): 10 X 45 X 11mm

Appearance:



- Detection Window
- Magnet
- LED Indicator
- Reed Switch
- Tamper Switch
- Infrared Sensor
- RF antenna
- Battery Compartment
- Software Upgrading Terminal Block
- Connector for Wired Sensors (N/C)

! Note! The door sensor is set in Normal Zone1 as default. It will cause on immediate alarm if the magnet depart from the transmitter more than 2cm in arming state.



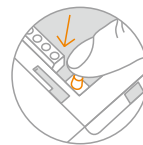
LED Indicator:

- LED flashes once every 2 seconds: PIR warming up
- LED flashes once every 3 seconds: Lower battery, please replace the battery (AAAA LR61)
- LED flashes once every 1 second: Detecting alarm/tamper alarm

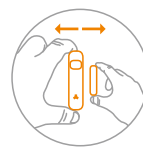
Tamper Switch:

Once the case is opened, the tamper switch will be triggered.

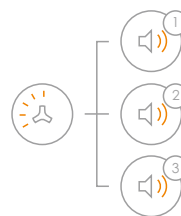
Connecting Sensor to Control Panel:



1. Press the enroll button of control panel, the control panel enters into enrolling status, the LED lights up in red. (Press again the enroll button within 20 seconds to exit enrolling state.)



2. Connecting PIR sensor to control panel: power on or trigger the PIR sensor.
Connecting door sensor to control panel: depart the transmitter and magnet. (Enrolled by PIR, the default zone is home mode 1, enrolled by door sensor, default zone is normal zone 4).



- 1 System beeps once, the LED light flashes once, the enrollment is successful.
- 2 If system beeps twice and the LED light flashes once, the accessories have been enrolled before.
- 3 If three beeps are heard and LED light flashes once, the storage is full.

(Note! Please don't press tamper switch to enroll or enroll accessory in low battery status.)

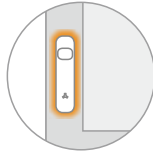
Enrolling Way	Power On		Connecting Door Sensor		Connecting PIR Motion Sensor	
	Door Sensor	PIR Motion Sensor	Door Sensor	PIR Motion Sensor	Door Sensor	PIR Motion Sensor
SS-P01 PLUS FHSS Frequency Sensor Zone Type	Wireless Zone 4	Home Mode1 (Wireless Zone 1)	Wireless Zone 4	Home Mode1 (Wireless Zone 1)	Wireless Zone 4	Home Mode1 (Wireless Zone 1)
SS-P01 Normal Frequency Sensor Zone Type	Wireless Zone 1		Wireless Zone 1		Home Mode1 (Wireless Zone 5)	

Note: Wireless sensor zone type will be separately according to sensor for FHSS series. While normal frequency sensor type will not be separated.

PIR Working Mode:

Testing Mode:

When powered on, PIR starts to warm up, LED backlight flashes for 15 seconds to enter the testing mode. In this mode, it will enable the LED indicator to light and control panel to alarm every time once a movement is detected. After five detections, it enters into sleeping mode. And door sensor enters working mode.



Sleeping Mode:

The sleeping time of PIR approximately 3 minutes to save power. No movement detected within 3 minutes, the PIR detector goes back to the working mode. Once PIR is triggered, the PIR will light in red and alert alarming. PIR will re-enter into sleep mode after 2 times detections during the working mode. Any movement detected within 3 minutes, the PIR will not light in red and the alarm will not be activated. And it will extend the sleep time by another 3 minutes.

Walk Test:

1. After warm-up, PIR enters into working state.
2. Walk across detection area and watch the LED indicator to make sure it flashes once when detecting the movement and send signal to the alarm panel.



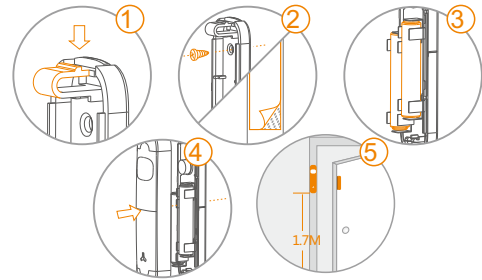
Door/Window Working Mode:

The Door/Window Sensor can be installed on doors, windows and any other objects that open and close. The sensor transmits signal to control panel when the magnet mounted near the sensor is moved away. The tamper protection ensures that sabotage attempts to move the sensor will result in an alarm activation.



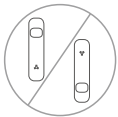
Installation:

1. The sensor should be installed in entry or exit which intruder can easily enter.
2. Sensors can be installed on door or window that open and close. Make sure the installed position have been already cleaned.
3. Remove the paper strip of the double-sided tape on the back of transmitter and magnet. Carefully mount the transmitter on the door frame and the magnet on the door.
4. Or you can fix the rear base on the place by using the screws for both transmitter and magnet.
5. Magnet can be placed on both left or right side of transmitter.
6. The sensor is more sensitive to cross-movement than to direct movement. The performance of the detector is optimal when detection direction is across the walking direction of intruders.

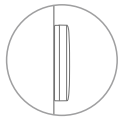


Detection Mode & Area:

Front View



Side View

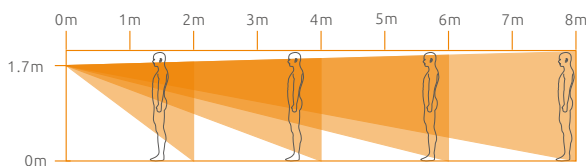


Top View



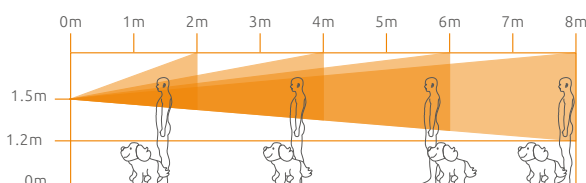
Normal Mode:

It's recommended to mount it at the height of 1.7m from the ground. Detection range is 90 degree, with 8 meters range.



Pet-immunity Mode:

It's recommended to mount it at the height of 1.5m from the ground and put the lens upside down for pet immunity. Detection range is 90 degree, with 8 meters range. Height limit for animal is 1.2 meters.



Connect the Wired Output Interface:

There are two terminal blocks can connect any N.C output wired sensor.



Notice:

1. Avoid mounting the detector close to places where heat changes fast or air stream flows frequently. (ie. Air conditioner, tube light, oven, waver, refrigerator etc.)
2. Avoid it facing to window which can be easily interfered by complicated environment. (ie. sunlight, crowds, or flowing cars etc.)
3. If two detectors are installed in the same detection scope, please adjust the location to avoid interference and false alarm.
4. Place the transmitter in the desired location, mount the magnet no more than 1 cm away from the transmitter.
5. Avoid mounting sensors in areas with a large quantity of metal and electric wiring.
6. The product can reduce the possibility of accident, but the user is advised to take all necessary precautions for the safety and the protection of the property.

