



**AI People  
& Vehicle  
Detection**



**AI Quick  
Search**



# AI-enhanced CCTV upgrades.

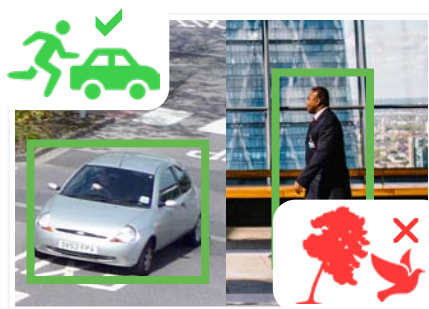
**Compact Series: NVRs available in 4, 8 and 16 channels with PoE**

The Watchguard™ Compact AI Series brings the best of AI surveillance features in an affordable package. Bring AI face recognition or AI person/vehicle detection to your CCTV installations, guaranteeing that important events are detected and can be acted upon. This NVR is perfect for new systems or replacement of existing NVRs to upgrade to AI capable surveillance.

- Records up to 16.0 megapixel (4920 x 3264)
- Up to 256Mbps incoming bandwidth; H.265 support
- Perimeter protection with up to 10 IVS rules per
- AI tripwire/intrusion rule by NVR up to 2 channels, or;
- AI face recognition up to 1 channel by NVR, or;
- AI motion detection by NVR up to 4 channels
- Support for ANPR up to 4 channels
- Up to 2 x SATA bay with support for up to 16TB capacity
- Up to 16 built-in port PoE switch HDDs per bay
- HDMI and VGA simultaneous video output
- Backup footage via external USB device or local network
- Decoding up to 16CH@1080P/25fps (AI disabled)



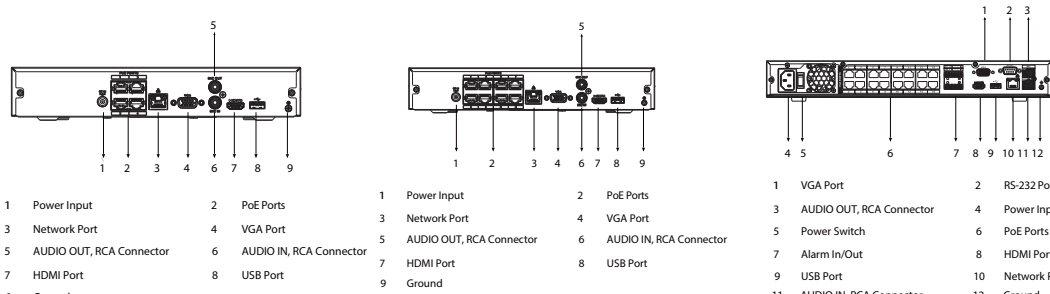
**AI Powered Facial Recognition**



**Smart Person & Vehicle Detection**



**Intelligent Footage Searching**

Specifications		4 Channel NVR	8 Channel NVR	16 Channel NVR
Ordering Information		NVR4COM-I	NVR8COM-I	NVR16COM-I
General	Main Processor / OS	Industrial-grade processor, Embedded Linux		
	Video Input	4 channel	8 channel	16 channel
	Interoperability	ONVIF 21.12(Profile T; Profile S; Profile G); CGI; SDK		
Display	Video Output	1 x HDMI, 1 x VGA		
	Display Resolution	Configurable from 3840 x 2160 to 1280 x 720		
	Display Split	1st screen - 1/4, 2nd screen - 1/4	1st screen - 1/4/8/9, 2nd screen - 1/4/8/9	1st screen - 1/4/8/9/16, 2nd screen - 1/4/8/9/16
Recording	Recording Resolution	Configurable from 16.0MP (4920 x 3264) to CIF (352 x 288)	Configurable from: 16.0MP (4920 x 3264) to D1 (704 x 480)	Configurable from 16.0MP (4920 x 3264) to CIF (352 x 288)
	Incoming Bandwidth (AI Disabled)	80Mbps Mbps incoming (recording/outgoing)	256Mbps Mbps incoming (recording/outgoing)	256Mbps Mbps incoming (recording/outgoing)
	Incoming Bandwidth (AI Enabled)	80Mbps Mbps incoming (recording/outgoing)	180Mbps Mbps incoming (recording/outgoing)	180Mbps Mbps incoming (recording/outgoing)
	Decoding Capacity (AI Disabled)	4 channel: 8.0MP (25fps)	8 channel 4.0MP (25fps)	16 channel 1080P (25fps)
	Decoding Capacity (AI Enabled)	4 channel: 5.0MP (25fps)	8 channel: 1080P (25fps)	16 channel 1080P (25fps)
	Video Compression	Smart H.265+ / H.265 / H.264 / H.264+ / MJPEG		
	Record Modes	General / motion detection / intelligent / alarm		
AI	AI Functions by Recorder	Face detection, face recognition, AI Tripwire/Intrusion and AI Human/Vehicle Detection		
	AI Functions by Cameras	Face detection, ANPR, People Counting, Heatmap, AI Tripwire/Intrusion and AI Human/Vehicle Detection		
Face Detection & Recognition	Face Detection (Recorder)	1 channel		
	Face Detection (Cameras)	4 channels	8 channels	8 channels
	Face Detection Features	Whitelist, Blacklist, Stranger Mode		
	Face Detection Performance	Up to 10 face databases with 200,000 face images		
	Face Recognition (Recorder)	1 channel (with Ultimate AI cameras)		
	Face Recognition (Cameras)	4 channels	8 channels	8 channels
	Face Recognition Performance	12 face images/s		
Motion Detection	Tripwire/Intrusion (Recorder)	2 channels, 10 IVS rules for each channel		
	Tripwire/Intrusion (Cameras)	4 channels	8 channels	8 channels
	Motion Detection (Recorder)	4 channels		
	Motion Detection (Cameras)	4 channels	8 channels	8 channels
Features	Alarm Input / Output	N/A	N/A	4 channels / 2 channels
	Trigger Events	Record, snapshot, IPC external alarm output, audio, buzzer, log, preset, email		
	Playback Mode	Instant playback, general playback, event playback, tag playback, smart playback (face and motion detection)		
	Backup Modes	USB device and network		
Network	Ethernet	1 x RJ-45 port (10/100Mbps)	1 x RJ-45 port (10/100/1000Mbps)	1 x RJ-45 port (10/100/1000Mbps)
	Power over Ethernet	4 ports, 10/100 Mbps, IEEE 802.3 af/at	8 ports, 10/100 Mbps, IEEE 802.3 af/at	16 ports, 10/100 Mbps, IEEE 802.3 af/at
	Network Functions	HTTP, TCP/IP, IPv4/IPv6, UPNP, RTSP, UDP, SMTp, NTP, DHCP, DNS, IP Filter, PPPoE, DDNS, FTP, Alarm Server, IP Search, Easy4ip		
	Remote View	iOS (iPhone, iPad) / Android devices		
Storage	Internal HDD	1 x SATA III Ports up to 16TB	1 x SATA III Ports up to 16TB	2 x SATA III Ports up to 16TB
	USB Interface	2 USB ports: 1 x Rear USB 2.0 / 1 x Front USB 2.0		
Environment	Power Supply	53VDC / 1.226A	53VDC / 1.812A	100~240VAC / 47/63 Hz
	Power Consumption	<10W (without HDD) / PoE: Max 25.5W for single port, 36W total	<10W (without HDD) / PoE: Max 25.5W for single port, 72W total	<10W (without HDD) / PoE: Max 25.5W for single port, 130W total
	Operating Environment	-10°C ~ +55°C / 10 ~ 93%RH		
	Dimensions / Rack Units	260mm x 233mm x 48mm / 1U	260mm x 233mm x 48mm / 1U	375mm x 328mm x 53mm / 1U
Additional Information	Weight	0.86kg (without HDD)	0.92kg (without HDD)	2.60kg (without HDD)
	Product Diagrams	 <p>1 Power Input      2 PoE Ports      3 Network Port      4 VGA Port      5 AUDIO OUT, RCA Connector      6 AUDIO IN, RCA Connector      7 HDMI Port      8 USB Port      9 Ground</p> <p>1 Power Input      2 PoE Ports      3 Network Port      4 VGA Port      5 AUDIO OUT, RCA Connector      6 AUDIO IN, RCA Connector      7 HDMI Port      8 USB Port      9 Ground</p> <p>1 VGA Port      2 RS-232 Port      3 AUDIO OUT, RCA Connector      4 Power Input      5 Power Switch      6 PoE Ports      7 Alarm In/Out      8 HDMI Port      9 USB Port      10 Network Port      11 AUDIO IN, RCA Connector      12 Ground</p>		

Above: NVR4COM-I, NVR8COM-I & NVR16COM-I

Your local Watchguard™ professional: