

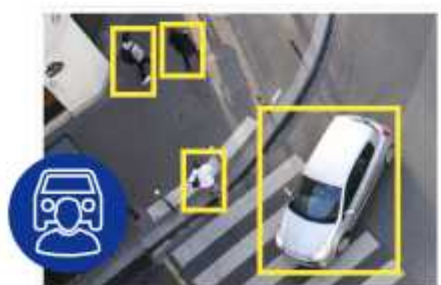


Enterprise AI surveillance.

Ultimate AI Series: NVRs available in 64 and 128 channel

Monitor your enterprise's operations with ease using the VIP Vision™ Ultimate AI Series Network Video Recorder. Enjoy accurate video notifications and seamless footage search powered by advanced AI. Simultaneously connect more users with 2.5Gbps Ethernet input for a better user experience. Protect what's most important to you by integrating a wide range of cameras and benefit from ample footage storage.

- Record up to 32.0MP with H.265 video compression
- Up to 1024Mbps bandwidth (800Mbps outgoing)
- Suite of AI functions for improved alerts & playback
- Supports AI face detection and recognition via NVR
- Supports AI human/vehicle detection via NVR
- Supports ANPR by camera up to 32 channels
- 8 x SATA bay with HDD support up to 16TB/bay
- Backup via external USB device or local network
- Supports 2 x 2.5Gbps Ethernet network input
- Decode up to 64 channels at 720p (fps)



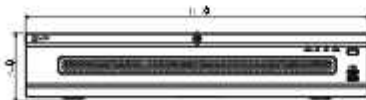
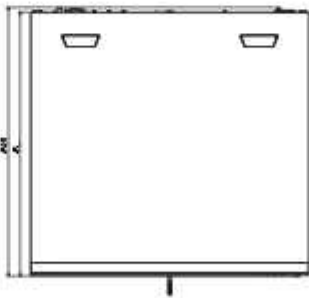
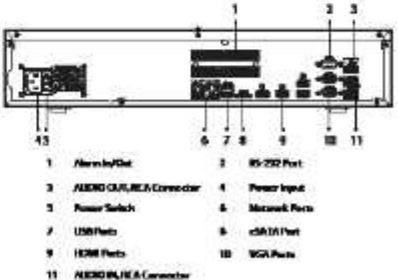
AI Human & Vehicle Detection



AI Face Detection & Recognition



Find Footage with AI Quick Search

		NVR64ULT-1	NVR128ULT-1
General	Video Input	64 channel	128 channel
	Processor & Operation	Industrial-grade processor, Embedded Linux OS, Web Interface / Local GUI	
	Interoperability	ONVIF (Profile T; Profile S; Profile G); CGI; SDK. Supports RTSP, Sony, Samsung, Axis, Pelco, Arecont, Canon, Chrome, IE9 and later, Firefox support.	
	App Integration	iOS / Android	
Recording	Recording Resolution	Configurable from 32.0MP (6528 x 4896) to D1 (704 x 576)	
	Network Bandwidth	1024Mbps (incoming/recording), 800Mbps (outgoing)	
	AI Disabled	512Mbps (incoming/recording), 400Mbps outgoing	
	AI Enabled	Video: Smart H.265+ / H.265 / H.264 / H.264+ / MJPEG / MPEG4, Audio: G.711a / G.711u / PCM / G.726	
	Video & Audio Compression	Up to 16 channels	
	Playback	General Recording, Motion Detection, Intelligent Events, Alarm Triggers	
Interface	Channels	Up to 16 channels	
	Modes	General Recording, Motion Detection, Intelligent Events, Alarm Triggers	
Decoding Capacity	AI Disabled	8CH@8.0MP/25fps, 64CH@720P/25fps	
	AI Enabled	8CH@8.0MP/25fps, 128CH@D1/25fps	
Backup Method		Portable hard drive / Burner / USB device / Network / eSATA	
HDD		8 x SATA bays up to 16TB per bay, RAID 0/1/5/6/10, Hot swapping	
Audio		1 channel input (RCA), 2 channel output (RCA)	
Alarm	Interface	16 channels input, 8 channels output	
	Types	General (motion, video loss, scene change, etc.), Anomalies (camera disconnect, disk full, IP conflict, etc.), Intelligent (AI alerts, face, human/vehicle, etc.)	
	Actions	Begin record, take snapshot, camera external alarm output, audio, buzzer, NVR log, camera preset, email	
	Display	4 x HDMI (up to 3840 x 2160), 2 x VGA (up to 1920 x 1080)	
Display	Input	1st Screen: 1/4/8/9/16/25/36/64, 2nd Screen: 1/4/8/9/16/25/36	
	Split	Single Source (Mirrored): HDMI1@4K, HDMI2@4K, HDMI3@8K, HDMI4@1080p, VGA1@1080p, VGA2@1080p	
Network	Mode	Multiple Sources (Up to 4 sources): HDMI1@4K + VGA1@1080p (mirror), HDMI2@4K + VGA2@1080p (mirror), HDMI3@4K, HDMI4@1080p	
	Input	2 x 7500Mbps Ethernet	
Network	Functions	HTTP, TCP/IP, IPv4/IPv6, UPNP, RTSP, UDP, SMTP, NTP, DHCP, DNS, IP Filter, PPPoE, DDNS, FTP, Alarm Server, IP Search, Easy4ip	
	Mode	Multi-address mode, load balance, fault tolerance & other network port binding modes	
USB & Other Inputs		2 x Front USB 2.0, 2 x Rear USB 3.0 / 1 x RS-485 A/B, 1 x RS-232, 1 x eSATA	
NVR Operated AI		Face Detection, Face Recognition, AI Human/Vehicle Detection, Video Metadata	
Supported Camera AI		Face Detection, Face Recognition, AI Human/Vehicle Detection, ANPR, People Counting, Heatmap, Video Metadata	
Artificial Intelligence	Face Detection	Gender, Age Group, Glasses, Expressions, Face Mask, Beard	
	By NVR	4 channels (up to 12 face images per second, per channel)	
	By Camera	64 channels	
	Capacity	NVR Supports up to 40 face databases and 300,000 face images	
Face Recognition	By NVR	4 channels (Face detection via NVR video stream analysis; Face recognition performed by NVR)	
	By Camera	20 channels (Face detection performed via Face Capture cameras via image stream; Face recognition performed via NVR)	
Human/Vehicle Detection	Functions	AI Tripwire & Intrusion (IVS), AI Motion Detection (SMD)	
	By NVR	IVS: 24 channels (10 rules per channel), SMD: 32 channels	
ANPR	By Camera	IVS: 64 channels, SMD: 64 channels	
	Functions	Up to 20,000 plate numbers, blacklist & allowlist	
Video Metadata	By Camera	32 channels	
	By NVR	People (clothing colour, hat, bag, umbrella, etc.), Vehicle (vehicle colour, vehicle model, number plate, etc.)	
Environment	Power Supply	100-240 VAC / 50-60 Hz	
	Power Consumption	≤ 18W (without HDD)	
	Operating Environment	-10°C ~ +55°C / 10 ~ 93%RH	
	Dimensions / Rack Units	440mm x 460mm x 95mm / 2U	
Additional Information	Weight	6.4kg (without HDD)	
	Product Diagrams	  	

Your local VIP Vision™ IP solutions professional: