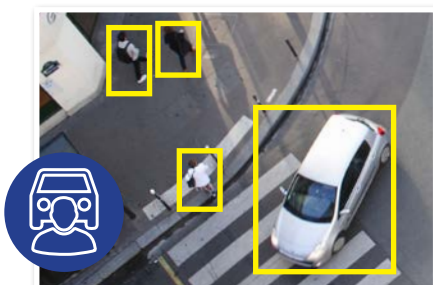


AI surveillance for business.

Professional AI Series: NVR available in 16 & 32 channels with 16 port PoE

Transform the way you secure your home or small business with VIP Vision™ Professional AI Series Network Video Recorders. Use superb accuracy AI detection to take the guesswork out searching footage and get important AI video notifications as they happen. Experience peace of mind with capacity for months of footage storage and integrate a huge range of cameras to protect what's most important to you.

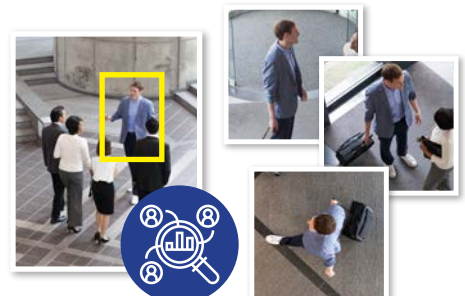
- Record up to 32.0MP with H.265 video compression
- Up to 384Mbps bandwidth (200Mbps AI enabled)
- Suite of AI functions for improved alerts & playback
- Supports AI face detection and recognition via NVR
- Supports AI human/vehicle detection via NVR
- Supports ANPR by camera up to 4 channels
- 4 x SATA bay with HDD support up to 16TB/bay
- Built-in 16 port Power over Ethernet switch
- HDMI (4K) and VGA simultaneous video output
- Backup via external USB device or local network



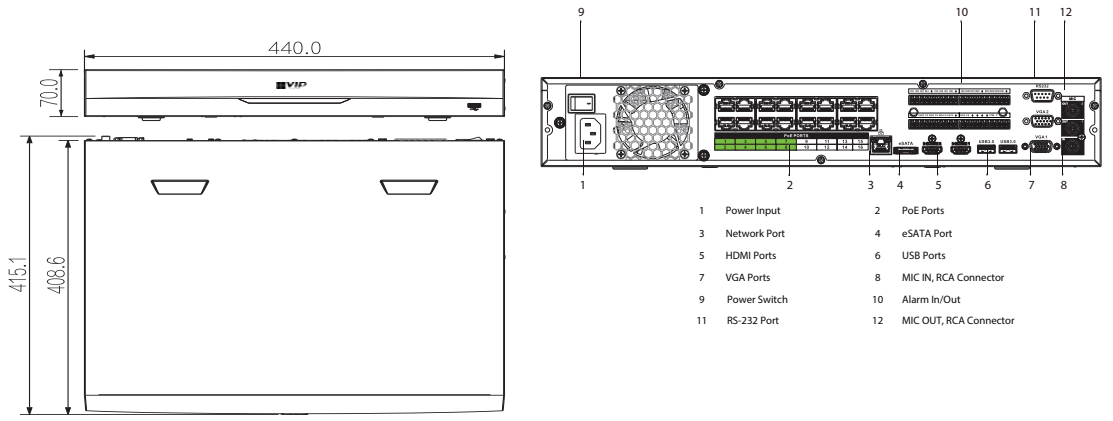
AI Human & Vehicle Detection



AI Face Detection & Recognition



Find Footage with AI Quick Search

		NVR16PRO16P-I3	NVR32PRO16P-I3
General	Video Input	16 channel	32 channel
	Processor & Operation	Industrial-grade processor, Embedded Linux OS, Web Interface / Local GUI	
	Interoperability	ONVIF 2.1.12(Profile T; Profile S; Profile G); CGI; SDK. Supports Panasonic, Sony, Samsung, Axis, Pelco, Arecont, Canon. Chrome, IE9 and later, Firefox support.	
	App Integration	iOS / Android	
Recording	Recording Resolution	Configurable from 32.0MP (6528 x 4896) to QCIF (176 x 144)	
	Network Bandwidth	384Mbps (incoming/recording/outgoing)	
	AI Disabled	200Mbps (incoming/recording/outgoing)	
	AI Enabled	Video: Smart H.265+ / H.265 / H.264 / H.264+ / MJPEG, Audio: G.711a / G.711u / PCM / G726	
	Video & Audio Compression	Up to 16 channels	
	Playback	General Recording, Motion Detection, Intelligent Events, Alarm Triggers, Point of Sale (POS events)	
Decoding Capacity	AI Disabled	8CH@8.0MP/25fps, 16CH@4.0MP/25fps	8CH@8.0MP/25fps, 32CH@1080P/25fps
	AI Enabled	12CH@4.0MP/25fps	24CH@1080P/25fps
Backup Method		USB device / Network / eSATA	
Interface	HDD	4 x SATA bays, up to 16TB per bay	
	Audio	1 channel input (RCA), 2 channel output (RCA)	
	Alarm	16 channels input, 6 channels output	
	Interface	General (motion, video loss, scene change, etc.), Anomalies (camera disconnect, disk full, IP conflict, etc.), Intelligent (AI alerts, face, human/vehicle, etc.)	
	Types	Begin record, take snapshot, camera external alarm output, access controller, audio, buzzer, NVR log, camera preset, email	
	Actions	2 x HDMI (up to 3840 x 2160), 2 x VGA (up to 1920 x 1080)	
	Display	1st & 2nd Screens: 1/4/8/9/16	
	Split	1st Screen: 1/4/8/9/16/25/36, 2nd Screen: 1/4/8/9/16	
	Network	1 x 1000Mbps Ethernet uplink, 16 x PoE 100Mbps (802.3af/at), ports 1-8 supports ePoE	
	Functions	HTTP, TCP/IP, IPv4/IPv6, UPNP, RTSP, UDP, SMTP, NTP, DHCP, DNS, IP Filter, PPPOE, DDNS, FTP, Alarm Server, IP Search, Easy4ip	
USB & Other Inputs		1 x Front USB 2.0, 2 x Rear USB 3.0 / 1 x RS-485, 1 x RS-232, 1 x eSATA	
Artificial Intelligence	NVR Operated AI	Face Detection, Face Recognition, AI Human/Vehicle Detection	
	Supported Camera AI	Face Detection, Face Recognition, AI Human/Vehicle Detection, ANPR, People Counting, Heatmap, Video Metadata	
	Face Detection	Gender, Age Group, Glasses, Expressions, Face Mask, Beard	
	By NVR	2 channels (up to 12 face images per second, per channel)	
	By Camera	16 channels	
	Face Recognition	NVR Supports up to 20 face databases and 20,000 face images	
	By NVR	2 channels (Face detection via NVR video stream analysis; Face recognition performed by NVR)	
	By Camera	16 channels (Face detection performed via Face Capture cameras via image stream; Face recognition performed via NVR)	
	Human/Vehicle Detection	AI Tripwire & Intrusion (IVS), AI Motion Detection (SMD)	
	By NVR	IVS: 4 channels (10 rules per channel), SMD: 8 channels	
	By Camera	IVS: 16 channels, SMD: 16 channels	
	ANPR	Up to 20,000 plate numbers, blacklist & allowlist	
	By Camera	8 channels	
	Video Metadata	People (clothing colour, hat, bag, umbrella, etc.), Vehicle (vehicle colour, vehicle model, number plate, etc.)	
Environment	Power Supply	100-240 VAC / 50-60 Hz	
	Power Consumption	≤ 13W (without HDD) / PoE: Max 25.5W for single port, 130W total	
	Operating Environment	-10°C ~ +55°C / 10 ~ 93%RH	
	Dimensions / Rack Units	440mm × 415mm × 70mm / 1.5U	
Additional Information	Weight	4.82kg (without HDD)	
	Product Diagrams	 <p>The product diagrams include a front view showing dimensions of 440.0mm width and 70.0mm height, and a side view showing dimensions of 415.1mm height and 408.6mm depth. The rear panel diagram shows 12 numbered ports: 1 Power Input, 2 PoE Ports, 3 Network Port, 4 eSATA Port, 5 HDMI Ports, 6 USB Ports, 7 VGA Ports, 8 MIC IN, RCA Connector, 9 Power Switch, 10 Alarm In/Out, 11 RS-232 Port, and 12 MIC OUT, RCA Connector.</p>	

Your local VIP Vision™ IP solutions professional: