



# Camera & security light in one.

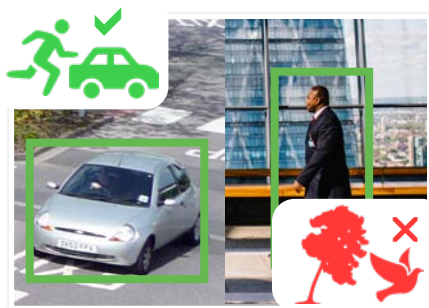
## Professional AI Series: Fixed lens AI turret dome pro in 5.0MP

This Professional AI Series CCTV Turret Pro combines advanced AI technology with a security light to create the ultimate security solution for homes and small businesses. It takes the standard Pro AI turret and equips it with a large image sensor to capture colour images for longer. During AI people and vehicle detection events, the camera will trigger a warm LED light to deter intruders.

- Stream up to 5.0MP (2960 x 1668) at 25fps
- Capture colour footage for longer with 1/1.8" sensor
- Warm LED light triggers on person/vehicle detection
- 24/7 Colour low light footage as low as 0.005lx
- H.265 encoding for efficient storage & streaming
- Up to 30m infrared range; true day/night (auto ICR)
- Back/highlight compensation & true WDR (120dB)
- MicroSD slot for recording at the edge up to 256GB
- Smart Motion Detection (SMD+) & Perimeter Protection to prevent false alarms, using VIP Vision NVRs



**Record Beyond Double Full HD**



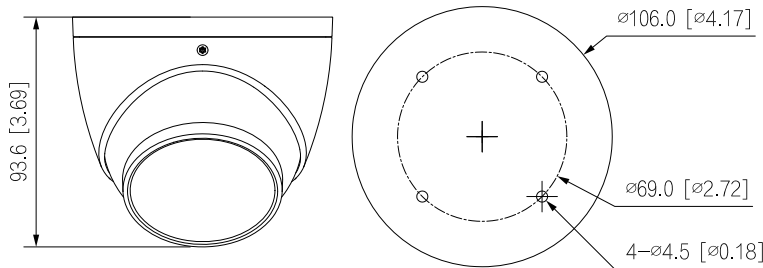
**Smart Person & Vehicle Detection**



**Superb Low Light Performance**

Specifications		5.0MP Fixed AI Turret Dome	
<b>Ordering Information</b>		<b>VSIPP-5DIRG-12-P</b>	
<b>Camera</b>	Image Sensor	1/1.8" 5.0MP Progressive Scan CMOS	
	Effective Pixels	2960 (H) x 1668 (V)	
	RAM / ROM	256 MB / 128MB	
	Min Illumination	0.0005 lux/F1.0, 0 lux (IR)	
	S/N Ratio	>56dB	
	Illuminator	2x warm LED light (30m range), Infrared LED, Auto/manual on/off control	
<b>Lens</b>	Lens / Iris	2.8mm F1.0 Fixed Lens	
	Field of View	Horizontal: 112°, Vertical: 60°, Diagonal: 134°	
	Focus	Fixed / 1.7m Min. Focus Distance	
<b>DORI</b>	Detect (25px/m)	58 m	
	Observe (63px/m)	23 m	
	Recognise (125px/m)	12 m	
	Identify (250px/m)	6 m	
<b>Video</b>	Resolution	5.0MP (2960 x 1668) to CIF (352 x 288/352 x 240)	
	Frame Rate	Main	4.0MP (1 ~ 25fps)
		Sub	D1 (1 ~ 25fps)
	Video Compression	H.265 / H.264	
	Bit Rate	H.265: 12 ~ 6144Kbps / H.264: 32 ~ 6144Kbps	
	Bit Rate Control	Constant bit rate (CBR) / Variable bit rate (VBR)	
	Day/Night	Color / B&W	
	Lighting Compensation	BLC / HLC / WDR (120dB)	
	White Balance	Auto / Natural / Street Lamp / Outdoor / Manual / Regional Custom	
	Gain Control	Auto / Manual	
	Noise Reduction	3D DNR	
Picture Control	Mirror / Flip (0°, 90°, 180°, 270°) (Support 90°/270° with 4.0MP resolution and lower)		
<b>IVS</b>	Video Functions	Motion Detection (4 zones), Region of Interest (4 zones), Privacy Masking (4 zones), Smart Infrared	
	AI Functions	<b>Smart Motion Detection (SMD+):</b> People and vehicle detection using motion detection <b>Perimeter Protection:</b> People and vehicle detection using tripwire or intrusion rules	
	Intelligent search	Search people or vehicle detection events (SMD+, Perimeter Protection)	
<b>Network</b>	Ethernet	RJ-45 (10/100 Base-T)	
	Protocol	IPv4; IPv6; HTTP; TCP; UDP; ARP; RTP; RTSP; RTCP; RTMP; SMTP; FTP; SFTP; DHCP; DNS; DDNS; QoS; UPnP; NTP; Multicast; ICMP; IGMP; NFS; SAMBA; PPPoE; SNMP	
	Streaming Method	Multicast	
	Max. User Access	20 Users (Total bandwidth: 48MB)	
<b>Interface</b>	Audio Interface	Built-in Mic / Audio Compression - G.711a; G.711Mu; G.726; PCM	
	Alarm Interface	N/A	
	RS485	N/A	
	Edge Storage	MicroSD Card (up to 256GB) / NAS / FTP / SFTP	
	Interoperability	ONVIF / P2P / CGI	
<b>Environmental</b>	Power Supply	12VDC / PoE (802.3af)	
	Power Consumption	<5.3W / 6.4W (PoE)	
	Operating Conditions	-40°C ~ +60°C / ≤95% RH	
	Ingress Protection	IP67	
	Housing	Metal	
	Pan/Tilt/Rotation	Pan: 0° ~ 360°, Tilt: 0° ~ 78°, Rotation: 0° ~ 360°	
	Dimensions	Ø106mm x 94mm	
Net Weight	0.59kg		

### Application



Junction Box	Wall Mount	
	VSBKTA139	VSBKTB204W
Pole Mount		Ceiling Mount
VSBKTA139 + VSBKTA152E	VSBKTB204W + VSBKTA152E	VSBKTA106 + VSBKTB220C

Your local VIP Vision™ IP solutions professional: