

- Security Light
- AcuPick search
- AI Scene Adaptive
- AI People & Vehicle Detection Gen.2
- 8.0 MEGAPIXEL
- 6.0 MEGAPIXEL
- 4.0 MEGAPIXEL



Camera & security light in one.

Professional AI Series: Motorised AI turret domes in 4.0MP, 6.0MP & 8.0MP

The Professional AI CCTV camera I3 range combines the latest in AI surveillance and a security light into one housing. During AI people and vehicle detection events, the camera will trigger a warm LED light to deter intruders and capture footage in full colour. Quickly search and track people & vehicles throughout entire sites across all Acupick CCTV cameras in your security system.

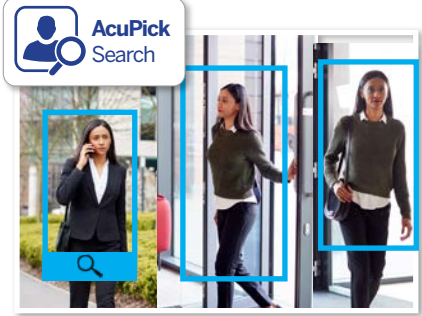
- Stream up to 8.0MP (3840 x 2160) at 25fps
- Up to 50m infrared range; true day/night (auto ICR)
- Intelligent search across all Acupick cameras
- Warm LED light triggers on person/vehicle detection
- H.265 encoding for efficient storage & streaming
- Back/highlight compensation & true WDR (120dB)
- MicroSD slot for recording at the edge up to 512GB
- AI weather and anti-flicker scene self-adaption
- Next-Gen Smart Motion Detection (SMD 4.0) & Perimeter Protection to prevent false alarms, using VIP Vision NVRs



Record up to 4K in Real Time



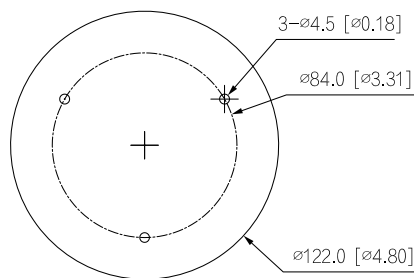
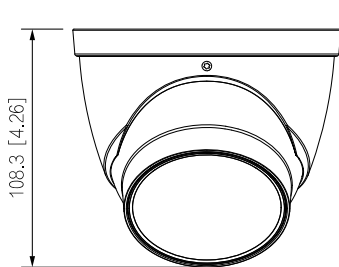
AI Human & Vehicle Detection



Intelligent people & vehicle search

Specifications		4.0MP Motorised AI Turret Dome	6.0MP Motorised AI Turret Dome	8.0MP Motorised AI Turret Dome
Ordering Information		VSIPP-4DIRMG-I3	VSIPP-6DIRMG-I3	VSIPP-8DIRMG-I3
Camera	Image Sensor	1/2.9" 4.0MP Progressive Scan CMOS	1/2.7" 6.0MP Progressive Scan CMOS	1/2.7" 8.0MP Progressive Scan CMOS
	Effective Pixels	2688 (H) x 1520 (V)	3288 (H) x 1850 (V)	3840 (H) x 2160 (V)
	RAM / ROM	1GB / 256MB		
	Min Illumination	0.005 Lux/F1.4 (Color), 0.0005 lux/F1.4 (B/W, 30 IRE), 0 lux (Illuminator on)	0.007 Lux/F1.4 (Color), 0.0007 lux/F1.4 (B/W, 30 IRE), 0 lux (Illuminator on)	0.007 Lux/F1.4 (Color), 0.0007 lux/F1.4 (B/W, 30 IRE), 0 lux (Illuminator on)
	S/N Ratio	> 56dB		
Illuminator	4x warm LED light (40m range), 2 x Infrared LED (50m range), Auto/manual on/off control			
Lens	Lens / Iris	2.7 ~ 13.5mm F1.4 Motorised Varifocal Lens with Fixed Iris		
	Field of View	Horizontal: 104°~29°, Vertical: 54°~16°	Horizontal: 114°~32°, Vertical: 58°~17°	Horizontal: 114°~32°, Vertical: 58°~17°
	Focus	Auto Focus / 0.1m Min. Focus Distance		
DORI	Detect (25px/m)	64m (wide) / 210m (tele)	85m (wide) / 280m (tele)	85m (wide) / 280m (tele)
	Observe (63px/m)	26m (wide) / 84m (tele)	34m (wide) / 112m (tele)	34m (wide) / 112m (tele)
	Recognise (125px/m)	13m (wide) / 42m (tele)	17m (wide) / 56m (tele)	17m (wide) / 56m (tele)
	Identify (250px/m)	6m (wide) / 21m (tele)	8m (wide) / 28m (tele)	8m (wide) / 28m (tele)
	Resolution	4.0MP (2688 x 1520) to CIF (352 x 288)	6.0MP (3288 x 1850) to CIF (352 x 288)	8.0MP (3840 x 2160) to CIF (352 x 288)
Video	Frame Rate	Main: 4.0MP (1 ~ 25fps) Sub: 4.0MP (1 ~ 25fps)	6.0MP (1 ~ 25fps) 1080p (1 ~ 25fps)	8.0MP (1 ~ 25fps) 1080p (1 ~ 25fps)
	Video Compression	H.265; H.264; H.264H; H.264B; MJPEG; Smart H.265+; Smart H.264+; AI H.265; AI H.264		
	Bit Rate	H.265: 3 ~ 16384Kbps / H.264: 3 ~ 16384Kbps		
Bit Rate Control	Constant bit rate (CBR) / Variable bit rate (VBR)			
Day/Night	Auto (ICR) / Color / B&W			
Lighting Compensation	BLC / HLC / WDR (120dB) / AI SSA			
White Balance	Auto / Natural / Street Lamp / Outdoor / Manual / Regional Custom			
Gain Control	Auto			
Noise Reduction	3D DNR			
Picture Control	Mirror / Flip (0°, 90°, 180°, 270°) (support 90°/270° with 4.0MP resolution and lower)			
Video Functions	Motion Detection (4 zones), Region of Interest (4 zones), Privacy Masking (8 zones), Smart Infrared			
IVS	AI Functions	Smart Motion Detection (SMD 4.0): People and vehicle detection using motion detection Perimeter Protection: People and vehicle detection using tripwire or intrusion rules Acupick: Search by people/vehicle attribute (e.g colour) and track their movements		
	Intelligent search	Search people or vehicle detection events (SMD 4.0, Perimeter Protection)		
	Ethernet	RJ-45 (10/100Base-T)		
Network	Protocol	IPv4; IPv6; HTTP; TCP; UDP; ARP; RTP; RTSP; RTCP; RTMP; SMTP; FTP; SFTP; DHCP; DNS; DDNS; QoS; UPnP; NTP; Multicast; ICMP; IGMP; NFS; SAMBA; PPPoE; SNMP;		
	Streaming Method	Multicast		
	Max. User Access	20 Users (Total bandwidth: 64MB)		
Interface	Video Interface	N/A		
	Audio Interface	Built-in Mic / Audio Compression - G.711a; G.711Mu; PCM; G.726; G.723		
	Alarm Interface	N/A		
Edge Storage	MicroSD Card (up to 512GB) / NAS / FTP / SFTP			
Interoperability	ONVIF / P2P / CGI			
Environmental	Power Supply	12VDC / PoE (802.3af)		
	Power Consumption	Max: <8.7W (12VDC), 10.3W (PoE)	Max: <8.2W (12VDC), 9.8W (PoE)	Max: <8.2W (12VDC), 9.8W (PoE)
	Operating Conditions	-30°C ~ +60°C / ≤95% RH		
	Ingress Protection	IP67		
	Housing	Metal		
	Pan/Tilt/Rotation	Pan: 0° ~ 360°, Tilt: 0° ~ 78°, Rotation: 0° ~ 360°		
	Dimensions	Ø108mm x 122mm		
Net Weight	0.69kg			

Application



	Junction Box	Wall Mount	Ceiling Mount
VSIBKTA137		VSIBKTB203W	VSIBKTA106 + VSIBKTB220C
Pole Mount		Corner Mount	
VSIBKTA137 + VSIBKTA152E		VSIBKTB203W + VSIBKTA152E	VSIBKTA106 + VSIBKTB305W + VSIBKTA152E

Your local VIP Vision™ IP solutions professional: