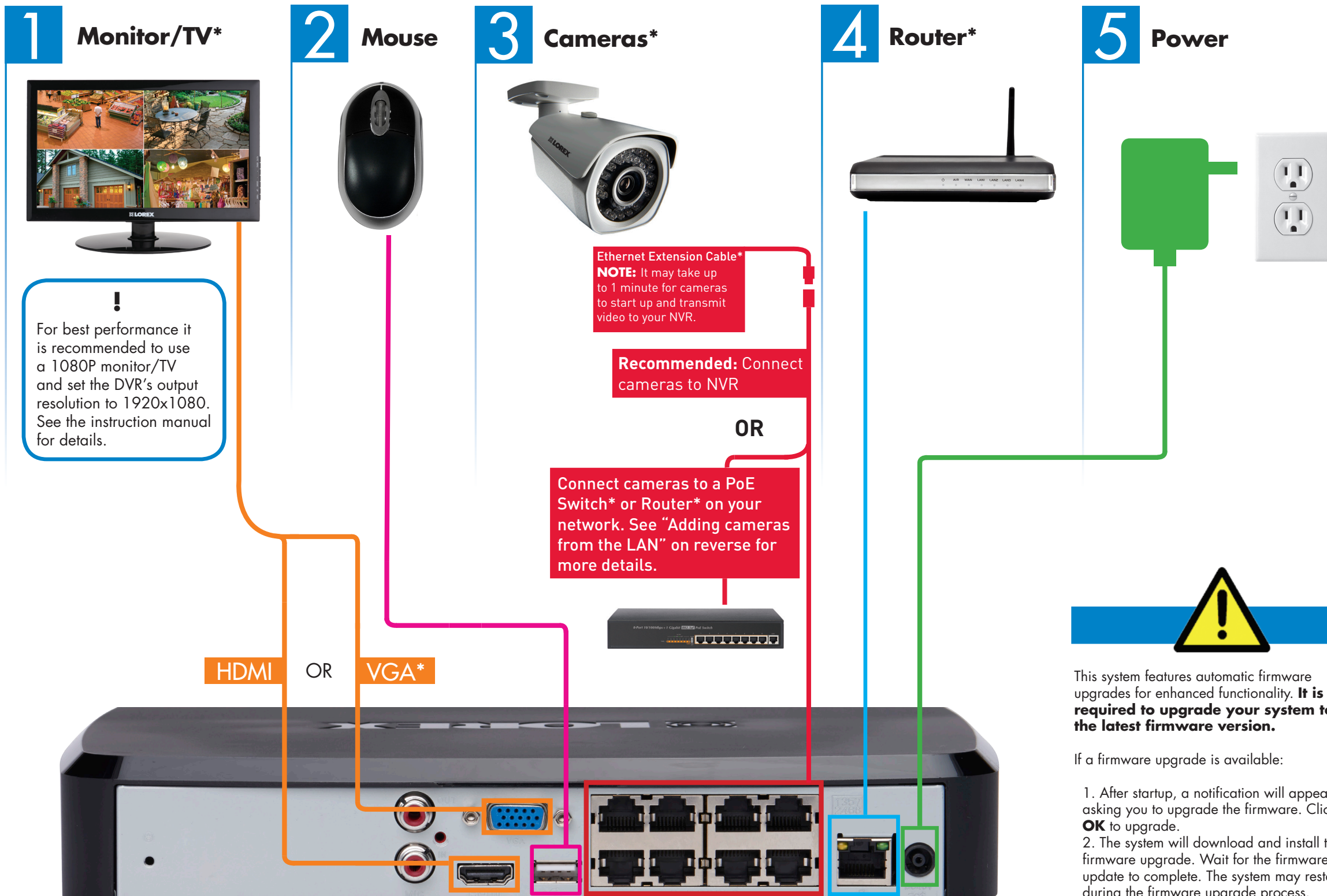


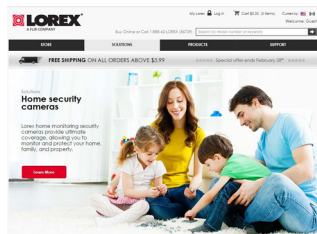
## PACKAGE CONTENTS:



## Connecting your system



## It's all on the web



Software and complete instruction manual available on:  
[www.lorextechnology.com/support](http://www.lorextechnology.com/support)

Information in this document is subject to change without notice. As our products are subject to continuous improvement, Lorex Corporation and our subsidiaries reserve the right to modify product design, specifications and prices, without notice and without incurring any obligation. E&OE © 2015 Lorex Corporation. All rights reserved.

8-channel configuration shown. Other channels will have the respective number of video inputs. For camera compatibility information, visit [www.lorextechnology.com/support](http://www.lorextechnology.com/support)

\*Not included/sold separately

## Using the mouse

### 1. Left-click:

- Click to open the Navigation Bar. Right-click to close the Navigation Bar
- **During split-screen display mode:** Double-click an individual channel to view it in full-screen. Double-click again to return to the split-screen display mode.
- **While navigating menus:** Click to open a menu option.

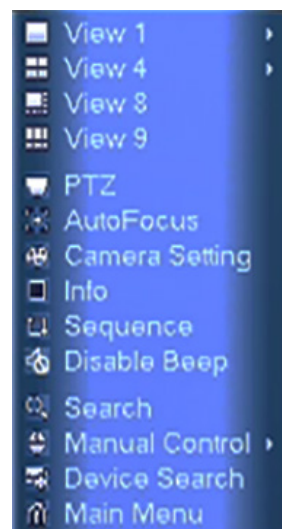
### 2. Right-click:

- **During live view:** Right-click anywhere on the screen to open the Quick Menu.
- **Within system menus:** Right-click to exit menus.



## Using the Quick Menu

Right-click to open the Quick Menu.



- Select camera/live display view
- Control PTZ cameras (not included)
- Control auto-focus cameras (not included)
- Adjust color settings
- View system information
- Start/stop sequence mode
- Disable beeping alarms
- Search and playback recordings
- Open manual recording controls
- Add IP cameras over the LAN
- Open Main Menu



If the system is beeping after startup, the Ethernet cable may not be connected or the system may not be connected to the Internet.

#### To stop the beeping:

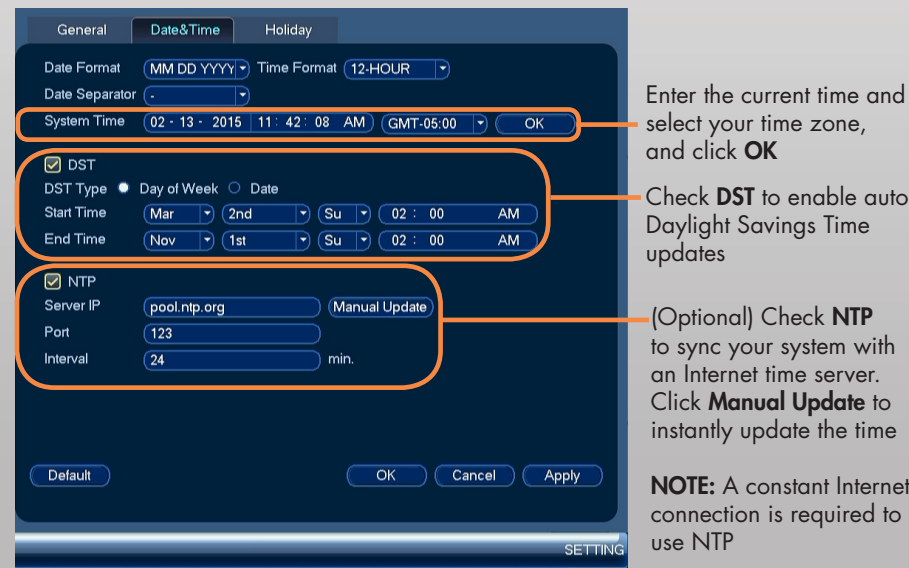
1. Connect an Ethernet cable from the system to your router and restart the system. **OR**
2. Right click and click **Disable Beep**.

## Setting the date and time

1. In live view, right-click and click **Main Menu**.
2. Log in using the system user name (default: **admin**) and password (default: **000000**).
- 3.



4. Click **General** and select the **Date&Time** tab.

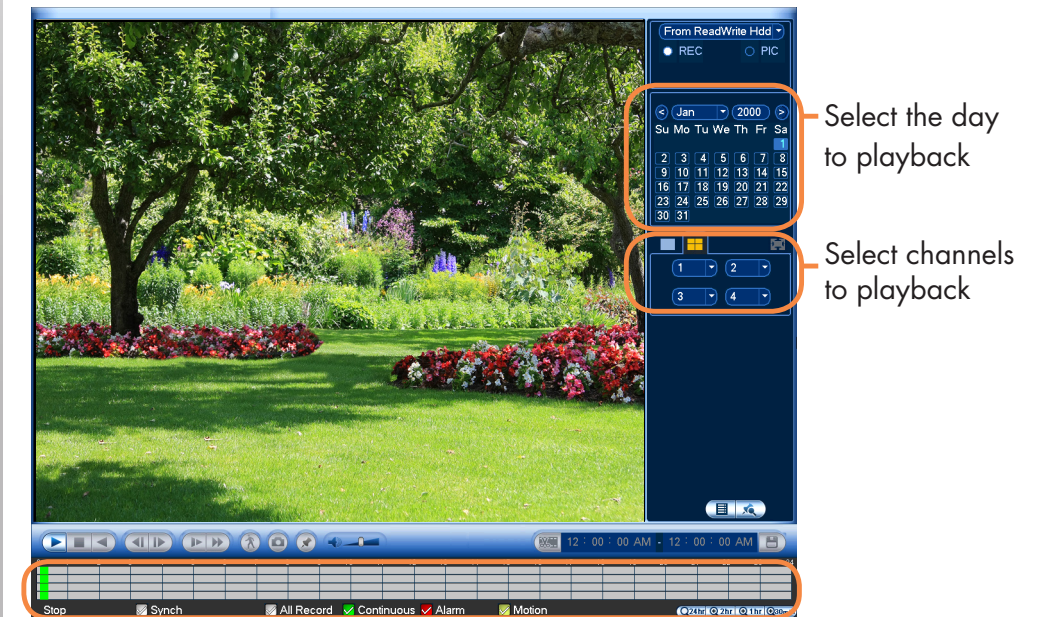


5. Click **Apply** to save changes.

It is important to set the correct time to ensure accurate time stamps on video recordings.

## Playback and search

1. From live view, right-click and then click **Search**.
2. Log in using the system user name (default: **admin**) and password (default: **000000**).
3. Use the calendar on the right to select the date to playback.
4. Use the drop-down menus to select the channels you would like to playback. Click the display options ( ) to playback multiple channels simultaneously.
5. Click inside the video bar to select the playback time. Playback starts immediately at the selected time.



Click inside the bar to select a playback time.